

Name: _____

Class: _____

MY BIG RIVER JOURNAL



PREPARING FOR YOUR JOURNEY

What kinds of things do you need to survive?
What do you need to bring on your canoe trip? Make a list in the box!

PASSPORT STAMPS

Passports are documents that are used to keep track of places that you have visited. Once you fill out the journal questions you can colour in the stamp icon to show that you have been there!



PACKING LIST

-
-
-
-
-
-

EVERY PERSON IS UNIQUE. FILL IN THE SPACE BELOW WITH WORDS OR DRAWINGS THAT DESCRIBE YOU!



WHAT'S SPECIAL ABOUT YOUR COMMUNITY?

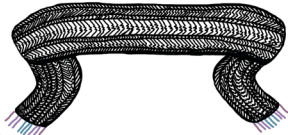
The Community I live in is:

What I love about my community:

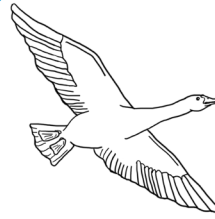
MY PASSPORT



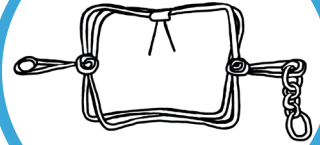
Fort
Smith



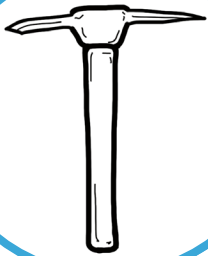
Grand
Detour



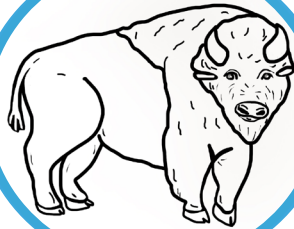
Slave River
Delta



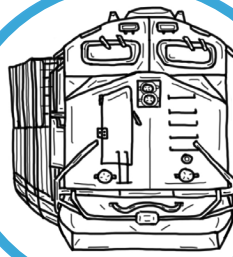
Fort
Resolution



Pine
Point



Buffalo
River



Hay
River



Point
Desmarais



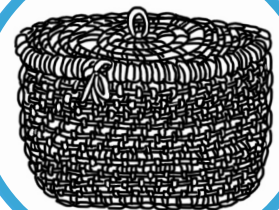
Deh Cho
Bridge



Fort
Providence



Mills
Lake



Sambaa
Deh



Jean Marie
River



Fort
Simpson

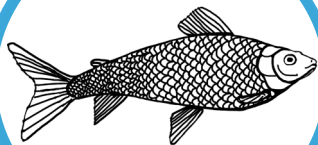


Willowlake
River



Wrigley

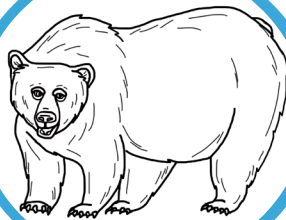
Name: _____



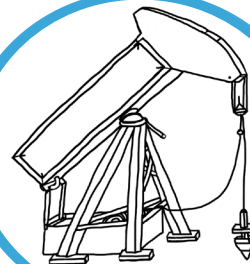
Blackwater
River



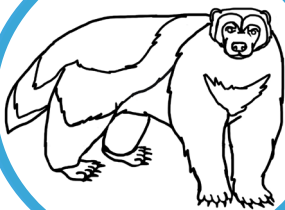
Keele
River



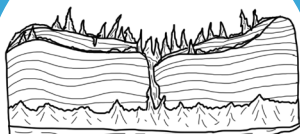
Tulit'a



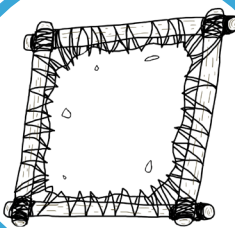
Norman
Wells



Carcajou
Ridge



Ramparts



Fort Good
Hope



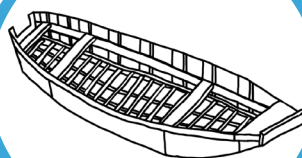
Arctic
Circle



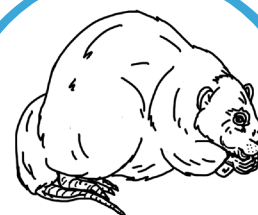
Thunder
River



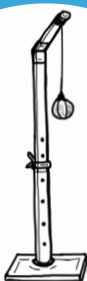
Tsiigehtchic



Point
Separation



Aklavik



Inuvik



Reindeer
Station

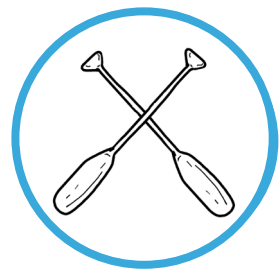


Arctic
Ocean



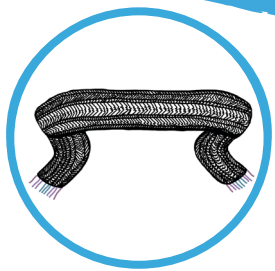
Tuktoyaktuk

FORT SMITH / THEBACHA



Imagine that you were there when one of these “old timey” photos was taken. What do you think is happening in the photo and why?

Henry Beaver is a nehiyaw Elder who starts his day by smudging with his grandson. How do you start each day? Answer with words or pictures.



Grand Detour is a French name. What does it mean in English? Think about why this spot might have this name. Make a list of possible reasons.

GRAND DETOUR

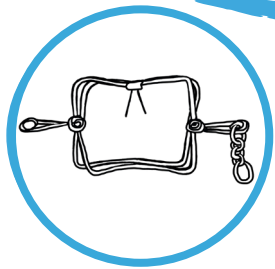
The Métis sash was originally a tool worn around the waist to create a pocket. It is now worn mainly as a symbol of pride for Métis culture and identity. Explain why Lisa Hudson chose these colours for the sash.

English: _____

SLAVE RIVER DELTA



One way that birds can be identified is by their colours. Draw a picture of your favourite bird and colour the beak, feet and feathers that help to identify it. Where does the bird live?

A large, empty rectangular box with a thick black border and a blue drop shadow, intended for a drawing of a bird.

FORT RESOLUTION / DENÍNU KÚĚ

A small, empty rectangular box with a black border and a blue drop shadow, likely for writing a name or a short answer.

Take a look at the map that shows where there were once fur trading posts in the NWT. Name the nearest one to your home in the box.

CHANGE

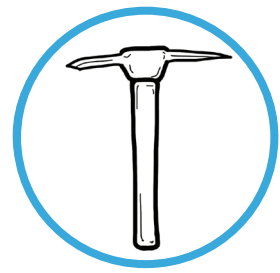
STAY THE SAME

How do you think life for the Indigenous people in this area changed because of the fur trade? How did life stay the same?

A large, empty rectangular box with a thick black border and a blue drop shadow, intended for a longer written response.

How did the fur trade change things between people and animals? Write or draw in the space provided.

PINE POINT



Pine Point was created as a town for the people that worked at the mine. When the mine closed, people had to move away. Make a list of the feelings that you might have if your town was closing and everyone had to move away.

-
-
-
-
-

What renewable and nonrenewable resources are used to create jobs for people in the NWT? Use the T-chart below.

RENEWABLE	NON-RENEWABLE



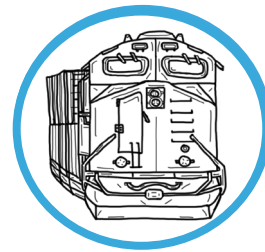
Is there a particular story that you have heard that has lots of meaning to you? Share your story below. Feel free to tell your story through drawing.

A large, empty rectangular box with a thick black border and a blue drop shadow, intended for a drawing or story.

BUFFALO RIVER

What does behaving respectfully look like? Explain or give examples.

HAY RIVER & KÁTŁ'ODEECHE FIRST NATION



Take a look at the pictures of the train, tug boats and barges. What types of transportation are used in your community? List as many as possible below.

If you have gardens in your community, what grows best? If you don't have gardens, what other ways do you get local food?



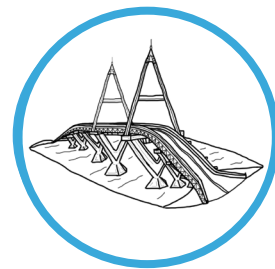
All the Indigenous names for Big River translate to either Big or Great River. Why do you think that is?

POINT DESMARAIS

Elder Caroline Bonnetrouge explained the Dene Law "Sleep at night and work during the day." Why is it important to follow this law?

DEH CHO BRIDGE

Before the bridge, there were times when people and vehicles couldn't cross. When a community doesn't have road access, what are some positive and negative impacts?



POSITIVE

NEGATIVE



What animals are harvested in your community?

FORT PROVIDENCE / DEH GÁH GOT'IE KUE

Keagan Nadli plays handgames as a way to connect with his culture and traditions. How do you celebrate your own culture? Explain.

MILLS LAKE / TÚAH



List all the plants that Elder Jonas Antoine talked about.

Why do you think this area is a place that people come to during food shortages? Explain.



We've told you what Sambaa K'e means. But what does "deh" mean? Where else have you heard it on this journey?

SAMBAA DEH

deh: _____

Is the Dene Law of helping each other just for humans? Who or what helps you and in what ways?

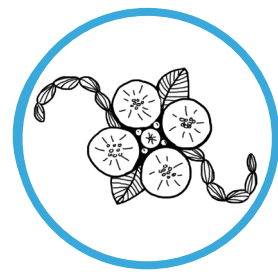
WHO OR WHAT HELPS?	HOW DO THEY OR DOES IT HELP?

JEAN MARIE RIVER / TTHETS'ÉHK'EDÉLİ

Trees are important as wood products but they are important for lots of other reasons. Make a list of all the things that trees do for people, animals, insects, the air and the water.

-
-
-
-
-

Why do you think it was important that Chief Louie Norwegian was able to get a school in Jean Marie? What would have been different if children were sent away, like in so many other communities?



Nahanni National Park is a protected area because it is a special place for many reasons. What is a special place near your home? List why it is special.

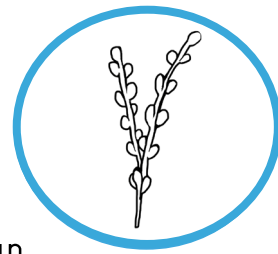
Name of Special Place:

FORT SIMPSON / ŁÍÍDLİİ KÜÉ

At the Ehdaa Historic Site, there is a tipi and an arbour where drum dances, traditional ceremonies and celebrations take place. Do you have a gathering place like this in your community? Describe or draw it.

Gathering place name:

WILLOWLAKE RIVER / ZAHNDAA DEH



Make a list of some things and people that make you feel happy.

Some people have "happy places." Can you think of a place that makes you happy? Draw or describe this place.



Describe or draw a time when you followed the Dene Law, "Be polite and don't argue with anyone."

WRIGLEY / PEHDZEH KI

What is the difference between a cliff and a mountain? Compare them in the T-Chart. Tip: compare the photos and read the bullet points!

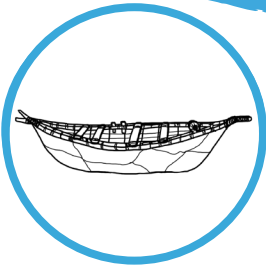
CLIFF	MOUNTAIN

BLACKWATER RIVER



Write a list of things that you have shared this week with others. Why is sharing important?

Share one phrase about checking the fishnet in the Indigenous language of the land you live on.



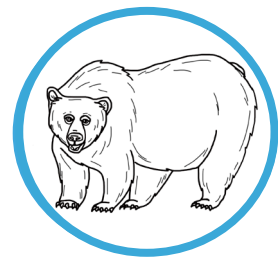
Have you been in a boat before? Think about all the ways a moose skin boat is the same and different than other boats.

SAME		DIFFERENT	
●		●	

KEELE RIVER / BEGÁDEÉ

As you continue towards Tultit'a, you see smoke coming out of the banks as you pass by. Do you know a story about this place? If you do, write it down. If not, take a guess and continue towards Tultit'a to learn more.

TULIT'A



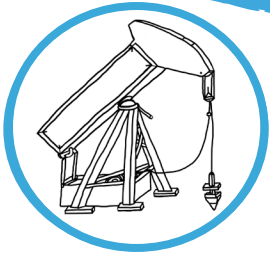
Tulit'a means, "where the two rivers or waters meet." Check it out with your canoe on the Google map. What two rivers are they talking about here? Write each name on a line below.

An Elder asks you to pick up some things at the grocery store. On the list there is lidí, lígafí and łéht'éwilé. If you don't know these words use the Tulít'a Dictionary in the Additional Resources section to get the items. What are they?

lidí

lígafí

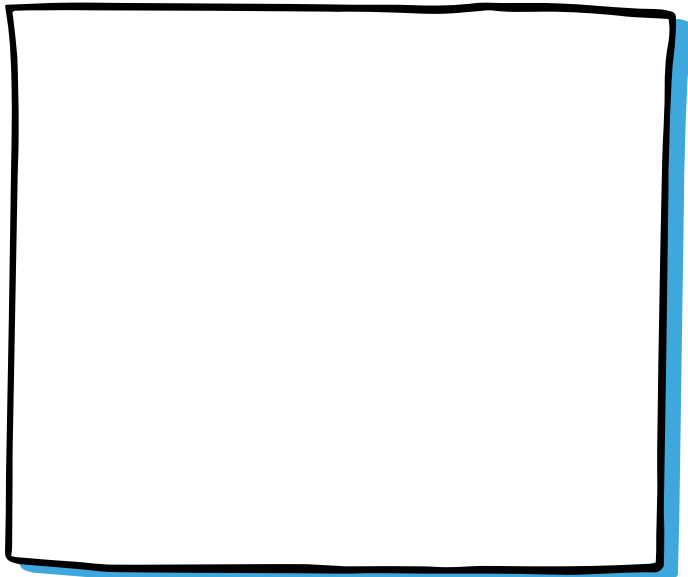
łéht'éwilé



After watching the two videos list the ways your community is similar to and different from Norman Wells. If possible, find out what ecoregion you live in.

NORMAN WELLS

For many years, the Great Norman Wells Fossil Hunt was a popular event. Check out the Guide to Fossils of the Norman Wells area in the Additional Resources. Draw or write about your favourite fossil.



SAME

DIFFERENT

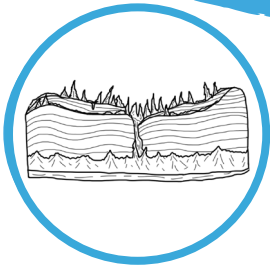
My Ecoregion: _____

NOGHA DAWEDA / CARCAJOU RIDGE



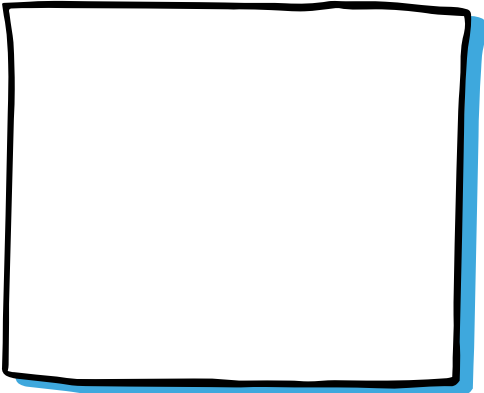
The Dene respect no'gha (wolverine) because he's a smart, fierce and strong animal. He is sometimes known as the 'stealer' and also called, 'brother-in-law.' What makes you unique?

What messages are shared by the story of Yamória and the Wolverine?



Listen to William's story. What does he say created the Ramparts? If you want, draw in the square too!

RAMPARTS / FEE YEE

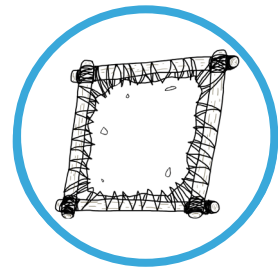


Listen to Stephen Kafwi's song, Spirit of Yamogha. What song represents a story that is meaningful to you?

FORT GOOD HOPE / RÁDELİHKÒ

Look at the beading designs on the picture of the slippers. How do they compare to the designs on your slippers or slippers that you have seen?

Who are the artists in your community? Describe what you like about their artwork.



SAME	DIFFERENT
•	•
•	•
•	•
•	•



Do you celebrate on June 21, the longest day of the year? What kinds of things do you do?

ARCTIC CIRCLE

List some ways that the landscape and the amount of light may be different in the arctic than in more southern regions of the NWT.

THUNDER RIVER / VIHTR'II NJIK

How does the photo taken by Gwich'in photographer James Jerome illustrate 'passing on the teachings'?



What does an archaeologist do? Would you like to do this job? Why or why not?

-
-
-
-
-



What do you think Harry Simpson meant when he said, "the land is our story book"?

TSIIGEHTCHIC

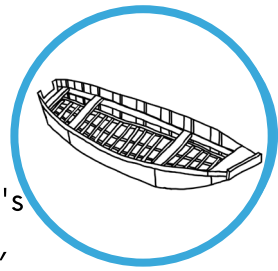
What kinds of fish can you catch where you live? What are their names in the language of the land that you live on?

FISH

POINT SEPARATION / SREHTADHADLAᑭᑦ

What other communities are found where the Big River and another river meet? Why do you think people live in these locations?

The Mackenzie Delta is Canada's second largest freshwater delta, and the 12th largest in the world. What was the name of the first delta you paddled on this journey? What do the two deltas have in common?



**COMMON
CHARACTERISTICS**

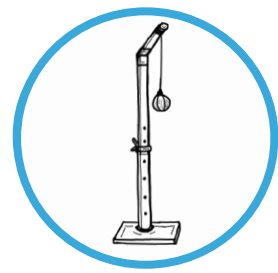


Why do you think Aklavik has so many muskrats?
Hint: Think about what you know about a delta.

AKLAVIK

Look at the Aklavik flag and describe why they picked the words and images. If you had a flag for yourself, what would it be and why? Draw it.

INUVIK



Think about the name of the school that you go to. What or who is it named after? Do you think that the name is a good choice for your community? Why or why not?

Make a list of adjectives describing the athletes in the arctic sports video.

•	•
•	•
•	•



REINDEER STATION

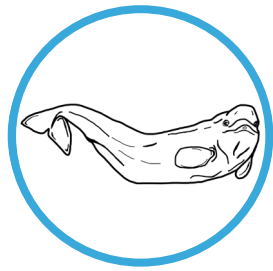
In the early days, some of the meat from the reindeer herd was sold to those who could afford it. Other meat was given out to those who needed it. What are ways food is shared in your community today?

•	•	•
•	•	•

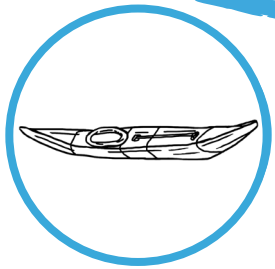
Look at the map of 9 different barren-ground caribou herds in the North. Name the herds you might see on your journey down the Big River.

ARCTIC OCEAN

Make a list of the animals you can think of that live in or near the Arctic Ocean. Describe or draw a picture of your favourite arctic animal.



ARCTIC ANIMALS

A large, empty rectangular box with a thick black border and a blue drop shadow, intended for a drawing or detailed description of an arctic animal.

A newspaper reporter wants to interview you about your canoe trip from Fort Smith to Tuktoyaktuk. What do you think is important for other people reading the newspaper to know about the journey? What do you tell the reporter?

TUKTOYAKTUK

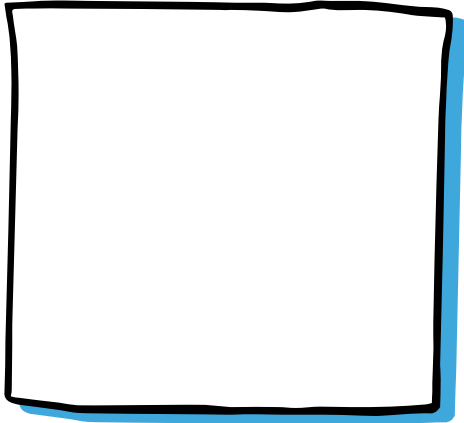
When James Pokiak (seen drumming in the photo) gets a beluga, he celebrates by drumming. What do you do to celebrate? Describe or draw in the box to the right.

A large, empty rectangular box with a thick black border and a blue drop shadow, intended for a drawing or description of a celebration.

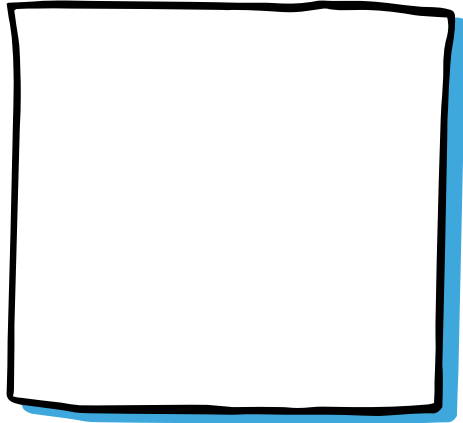
DENE LAWS

Draw a picture to represent each Dene Law that you have learned about on your journey down the Big River.

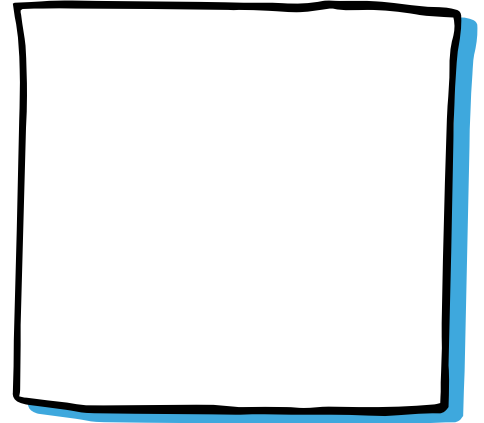
Young girls & boys should
behave respectfully



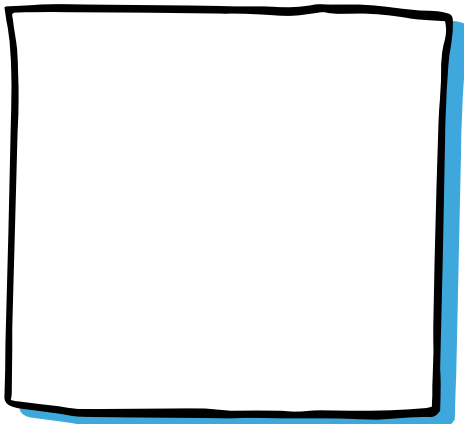
Sleep at night and work
during the day



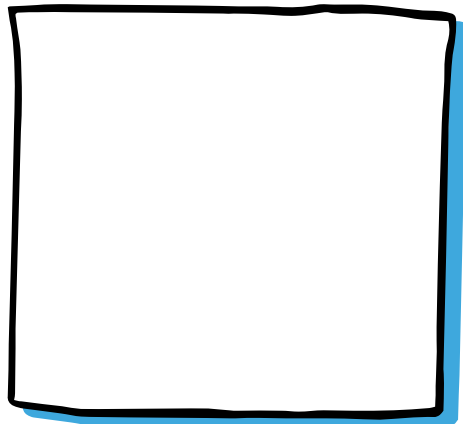
Help each other



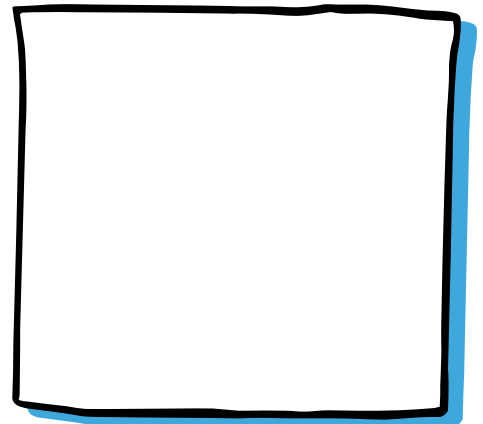
Be as happy as possible at
all times



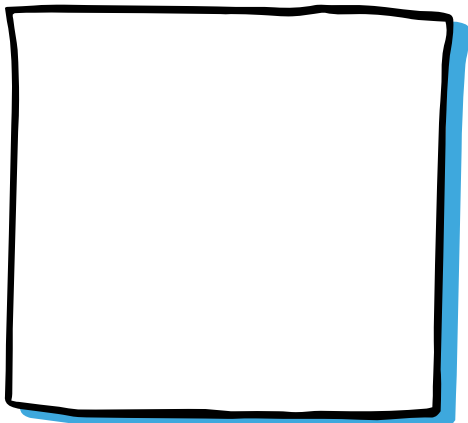
Be polite and don't argue
with anyone



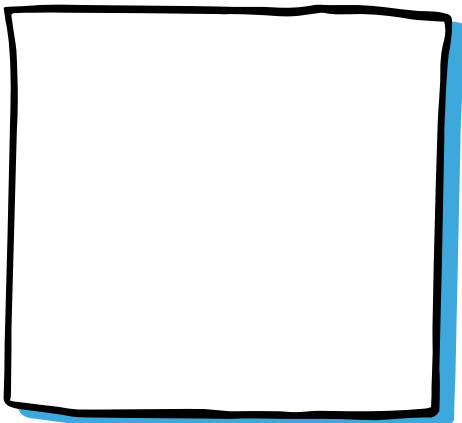
Share what you have



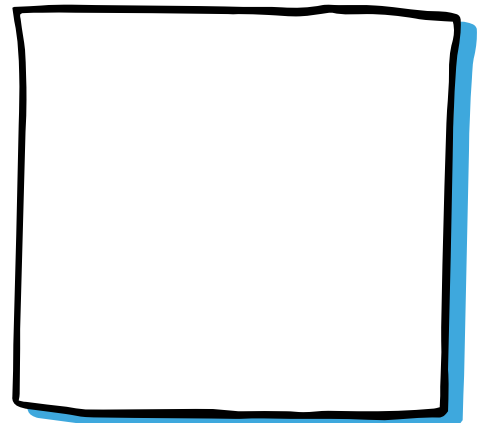
Pass on the teachings



Love each other as much
as possible



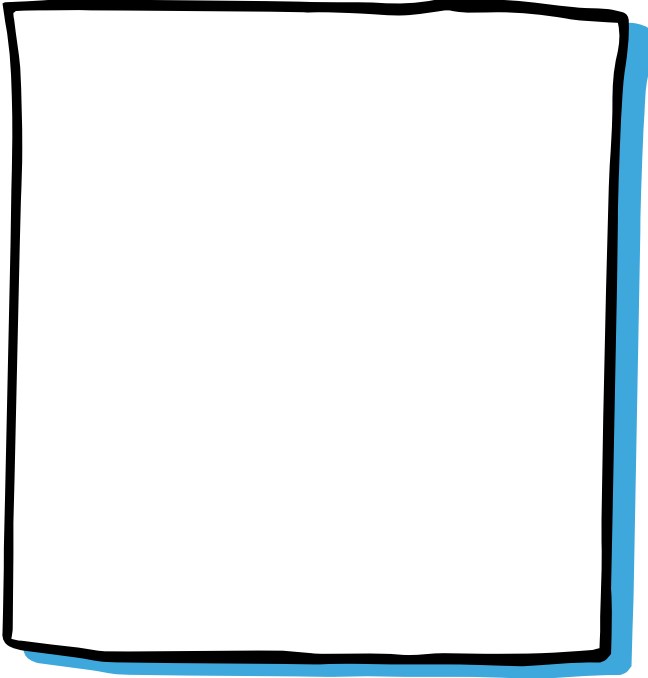
Be respectful of Elders and
everything around you



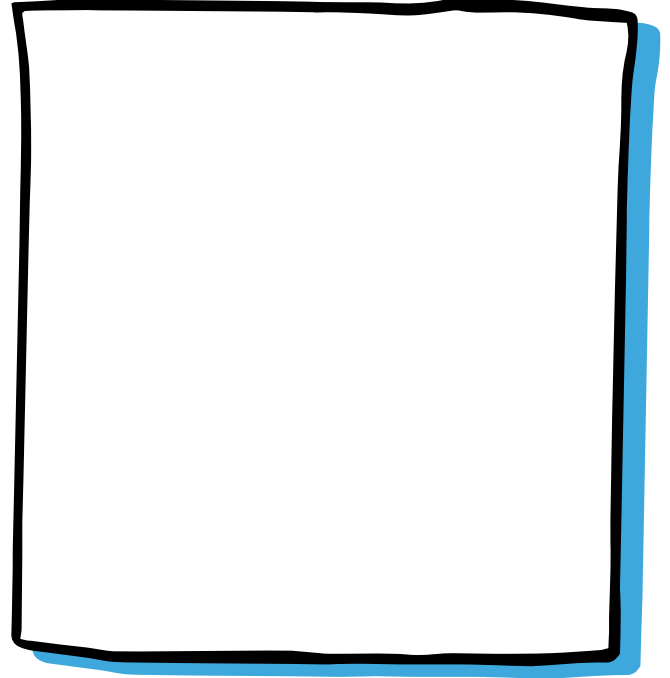
NATURAL LAWS

Inuvialuit are very respectful of the world around them. This extends to the universe, the environment, and society, including all living beings they encounter. The natural laws are what Inuvialuit live by. In the boxes below, draw a picture that represents each of the 4 natural laws.

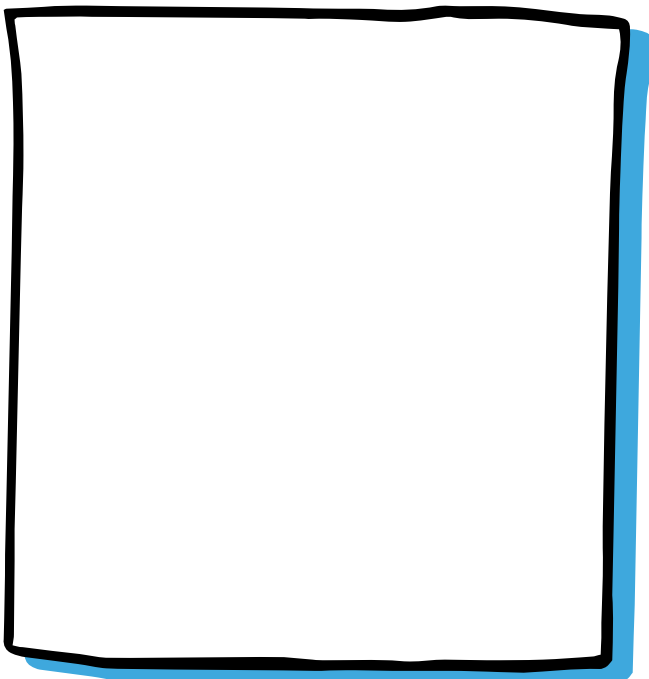
Working for the common
good



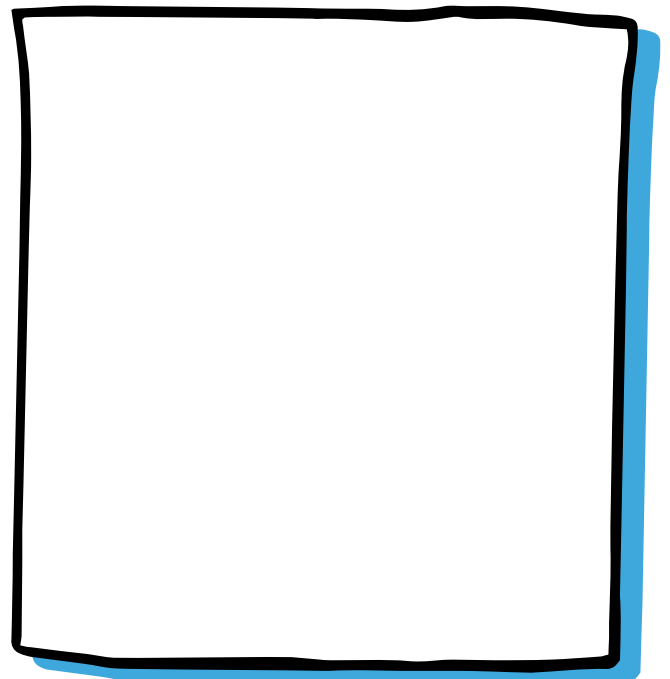
Being respectful of all
living things



Maintaining
harmony



Continually planning/preparing
for a better future



VOCABULARY

A blank, lined page from a notebook, designed for writing vocabulary. The page has a thick black border and a light blue background. The lines are horizontal and evenly spaced.